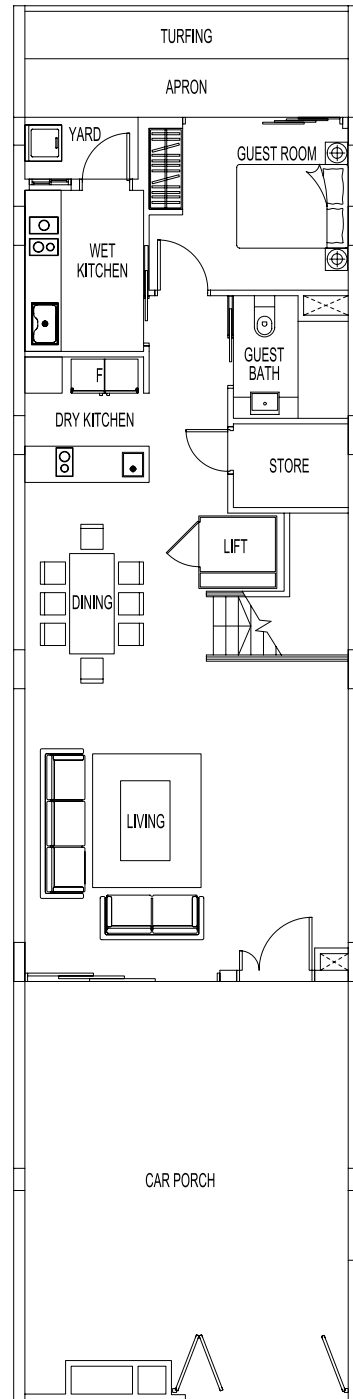


# INTERMEDIATE TERRACE - TYPE M(L) | TYPE Ma(L)

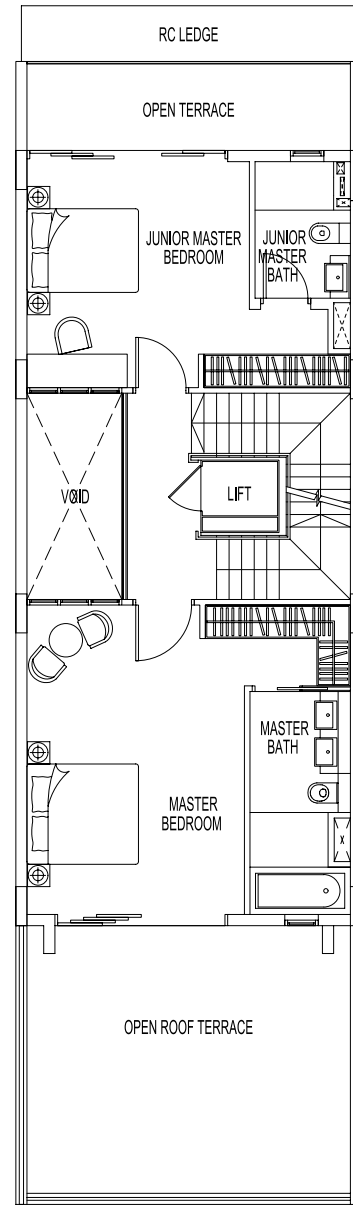
9, 12, 13, 16, 17, 20, 21, 24, 25 LUXUS HILL VIEW | 4, 5, 8 LUXUS HILL VIEW

MIRROR IMAGE: 10, 11, 14, 15, 18, 19, 22, 23, 26 LUXUS HILL VIEW | 3, 6, 7 LUXUS HILL VIEW

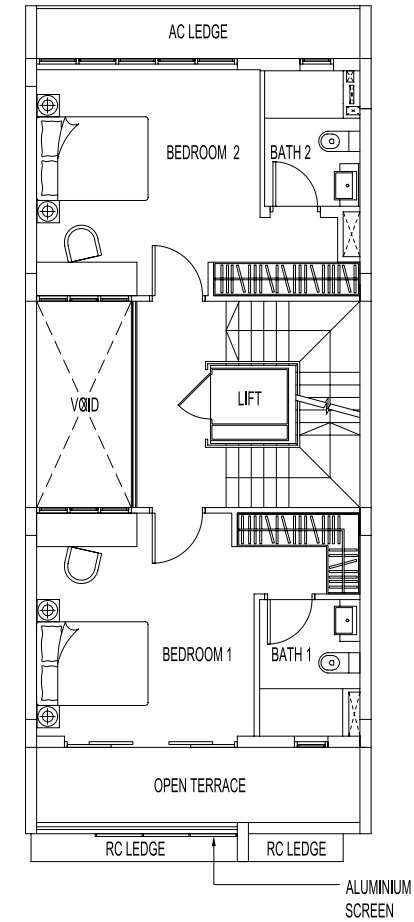
Plot Area: 150.0 sqm | Estimated Floor Area: 384 sqm



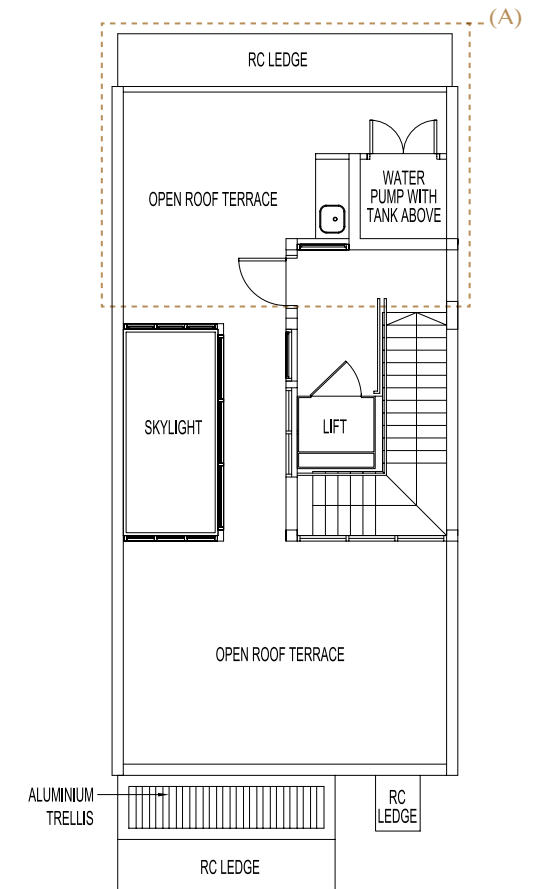
1st Storey



2nd Storey

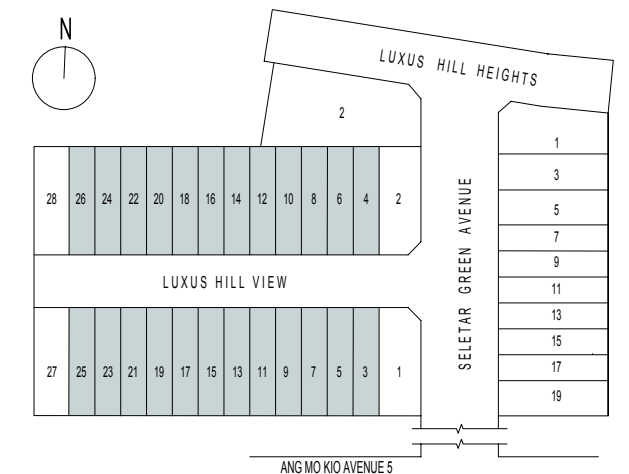
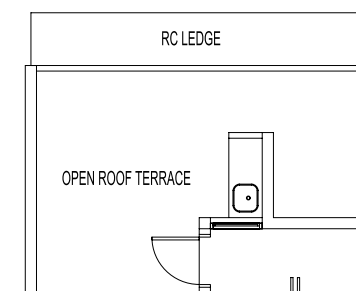


3rd Storey



Roof Terrace

(A) Applicable to Type Ma(L) only.



(Inclusive of car porch, AC ledge, open terrace, open roof terrace, skylight and water pump with tank area)

Plans are subjected to changes as may be required or approved by the relevant authorities. Areas are estimates only and are subjected to final survey.

All external and internal walls are of masonry and/or reinforced concrete panel and/or pre-fabricated panel construction and/or metal fencing.

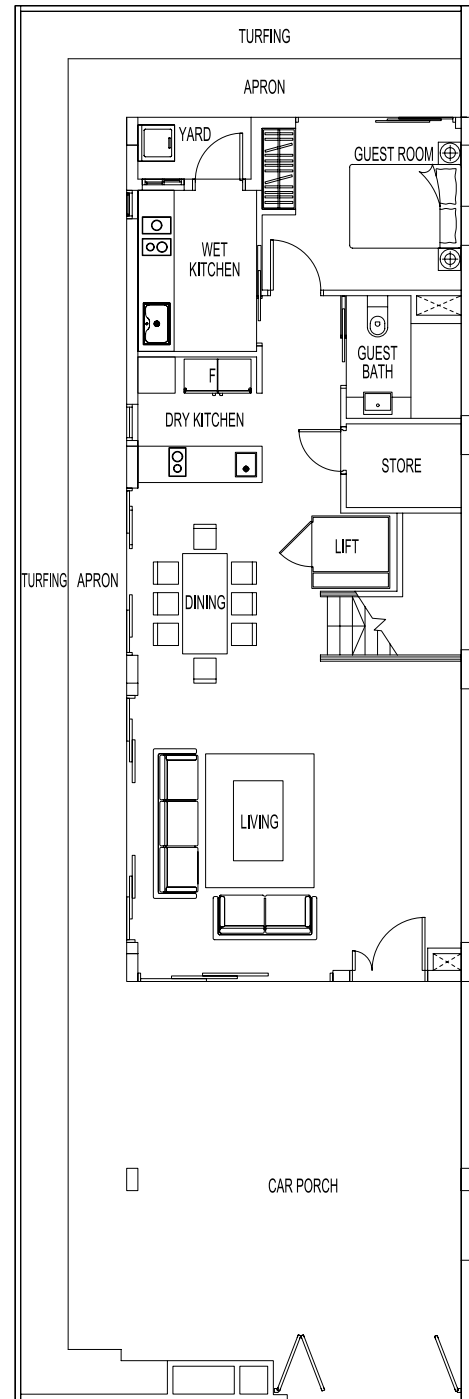
(A) Applicable to houses 4, 5, 8 and 3, 6, 7 (mirror image)

# CORNER TERRACE - TYPE M1(L)

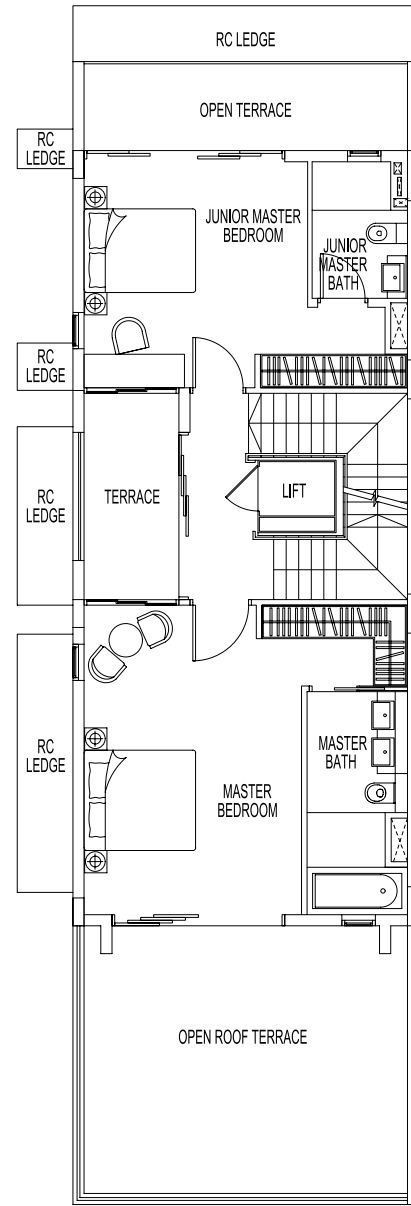
28 LUXUS HILL VIEW

MIRROR IMAGE: 27 LUXUS HILL VIEW

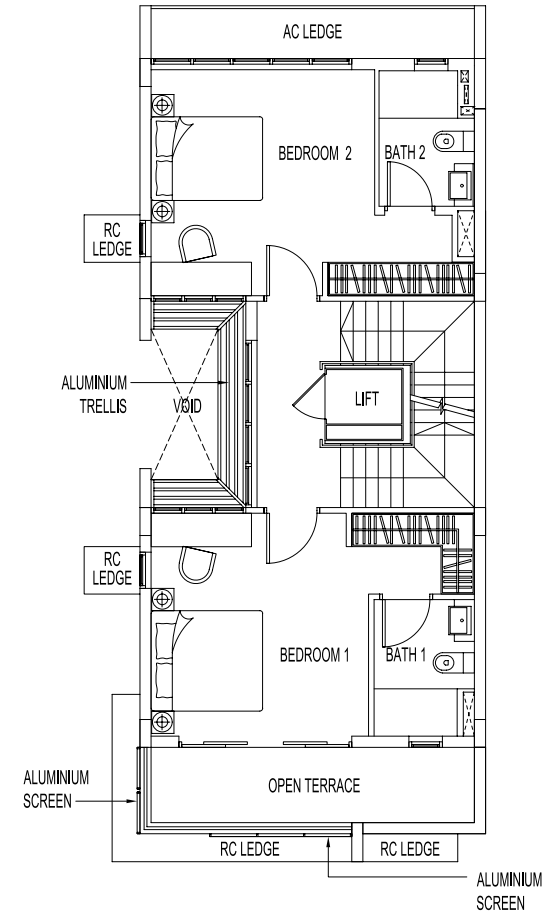
Plot Area: 202.5 sqm | Estimated Floor Area: 392 sqm



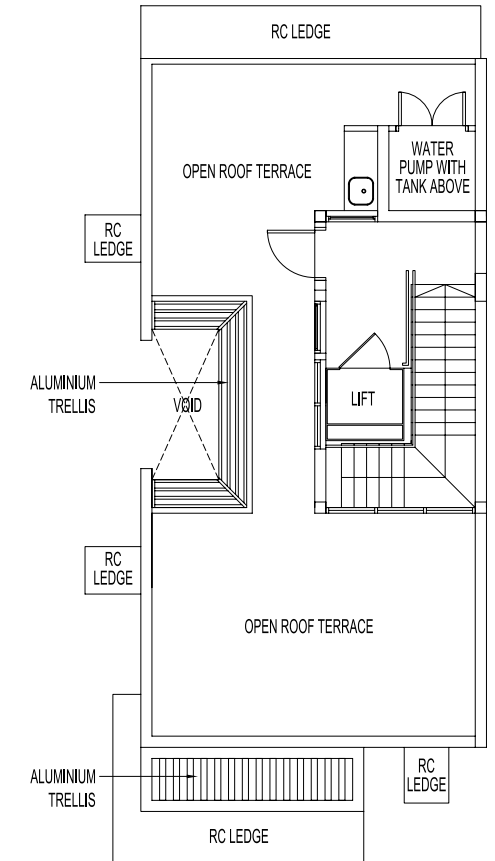
1st Storey



2nd Storey



3rd Storey

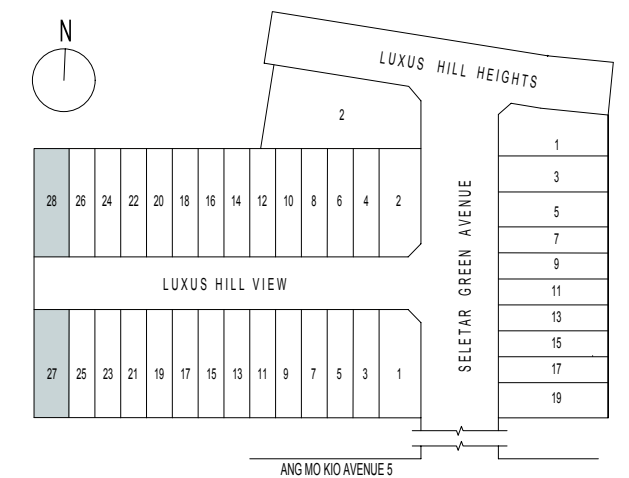


Roof Terrace

(Inclusive of car porch, AC ledge, open terrace, open roof terrace and water pump with tank area)

Plans are subjected to changes as may be required or approved by the relevant authorities. Areas are estimates only and are subjected to final survey.

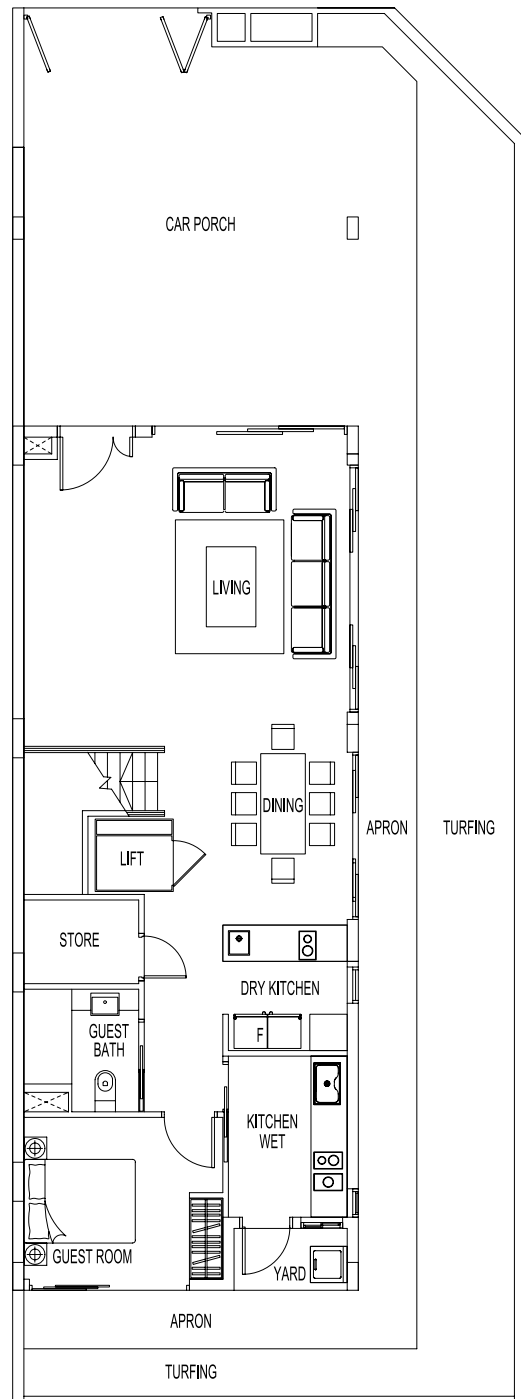
All external and internal walls are of masonry and/or reinforced concrete panel and/or pre-fabricated panel construction and/or metal fencing.



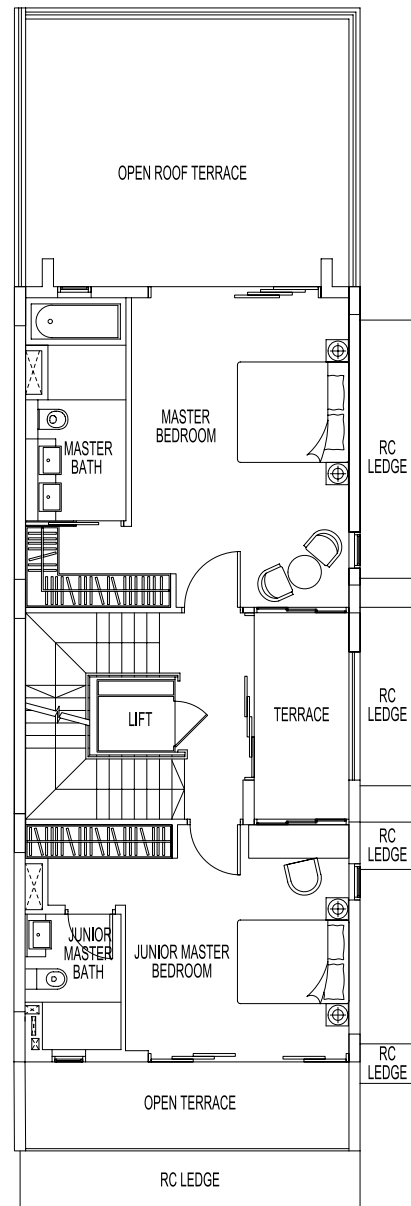
# CORNER TERRACE - TYPE M1a(L)

1 LUXUS HILL VIEW

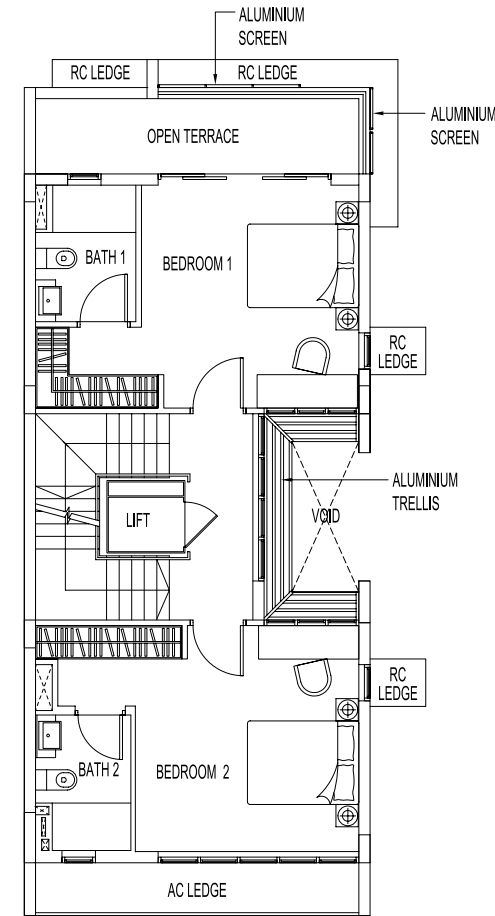
Plot Area: 224.7 sqm | Estimated Floor Area: 392 sqm



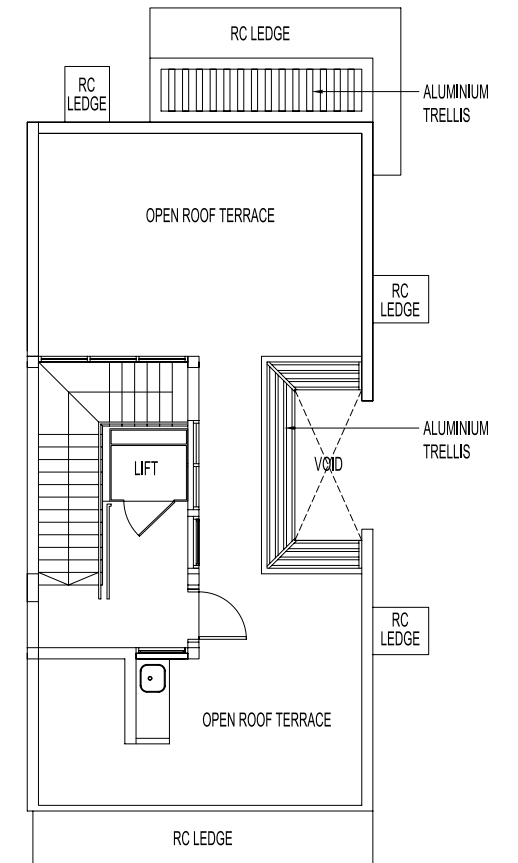
1st Storey



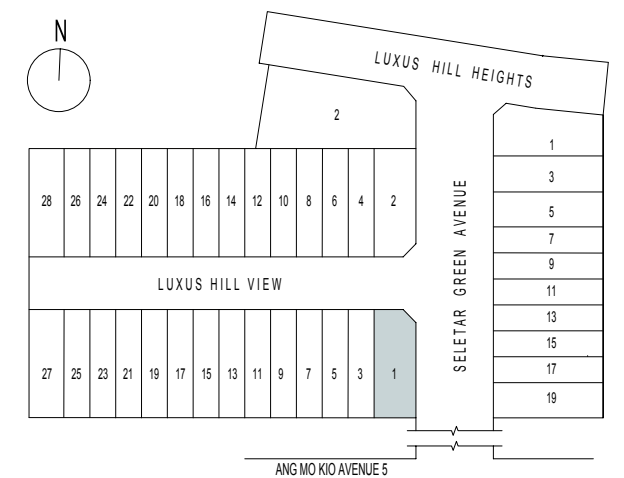
2nd Storey



3rd Storey



Roof Terrace



(Inclusive of car porch, AC ledge, open terrace and open roof terrace)

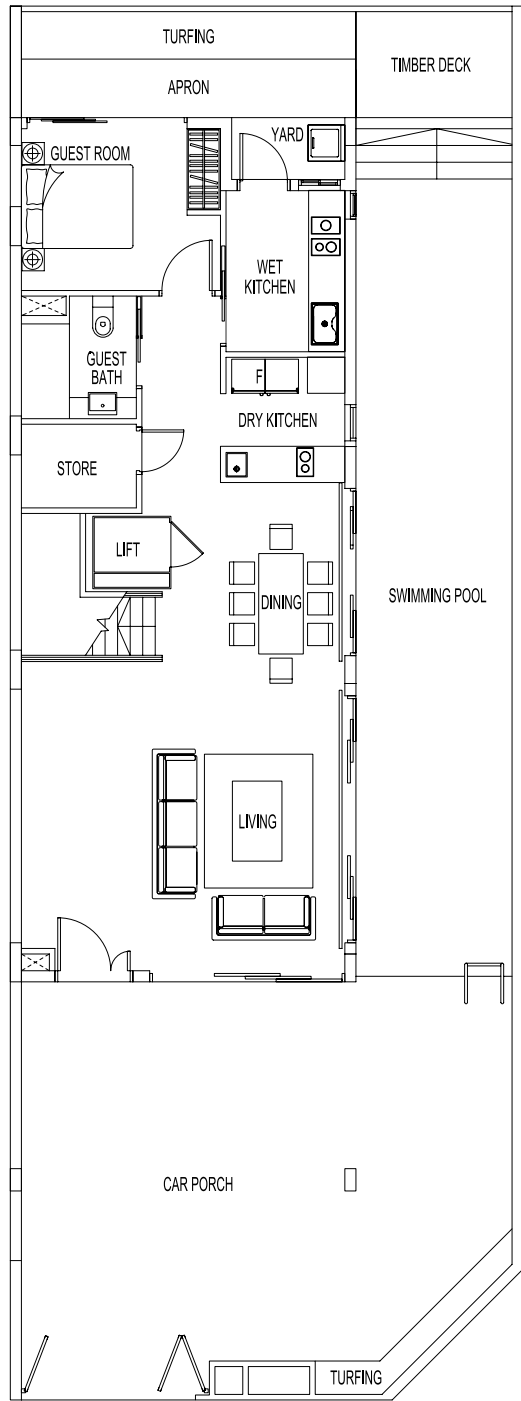
Plans are subjected to changes as may be required or approved by the relevant authorities. Areas are estimates only and are subjected to final survey.

All external and internal walls are of masonry and/or reinforced concrete panel and/or pre-fabricated panel construction and/or metal fencing.

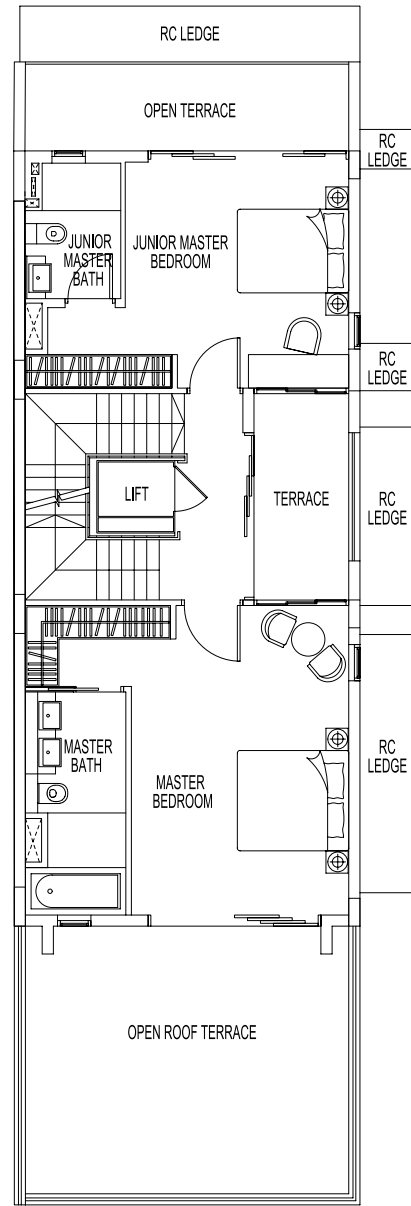
# CORNER TERRACE - TYPE M1a(S)(L)

2 LUXUS HILL VIEW

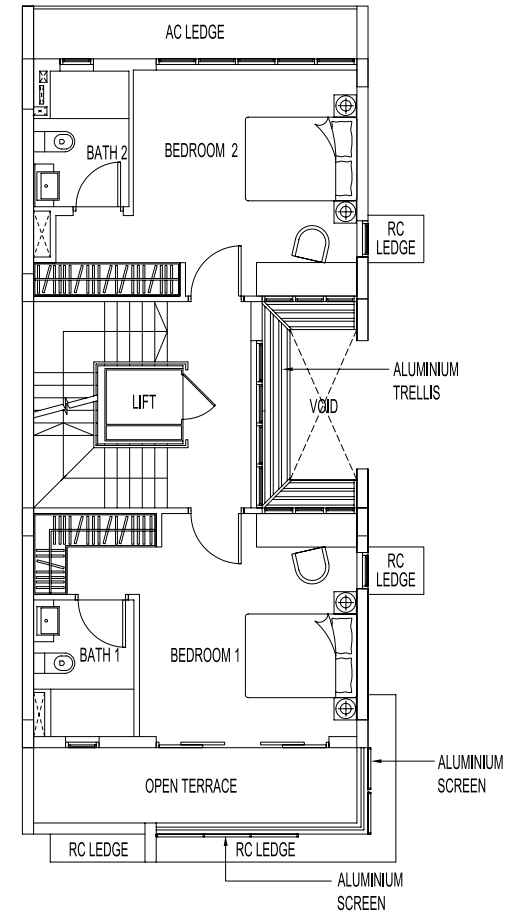
Plot Area: 224.7 sqm | Estimated Floor Area: 392 sqm



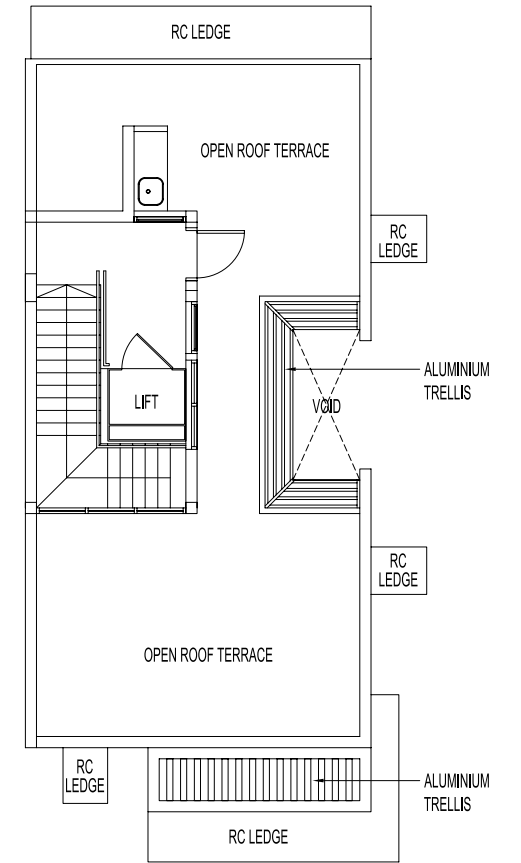
1st Storey



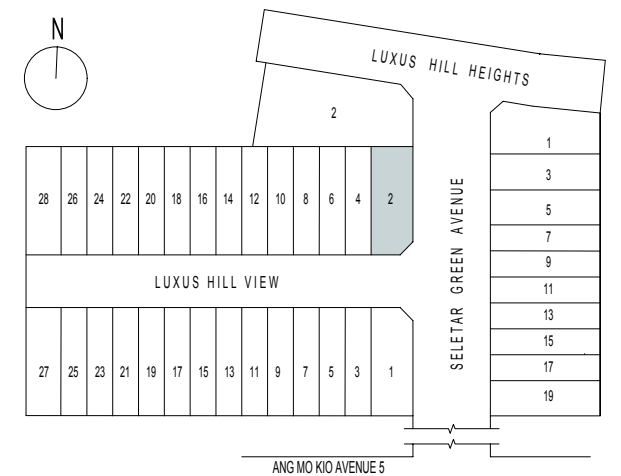
2nd Storey



3rd Storey



Roof Terrace



(Inclusive of car porch, AC ledge, open terrace and open roof terrace)

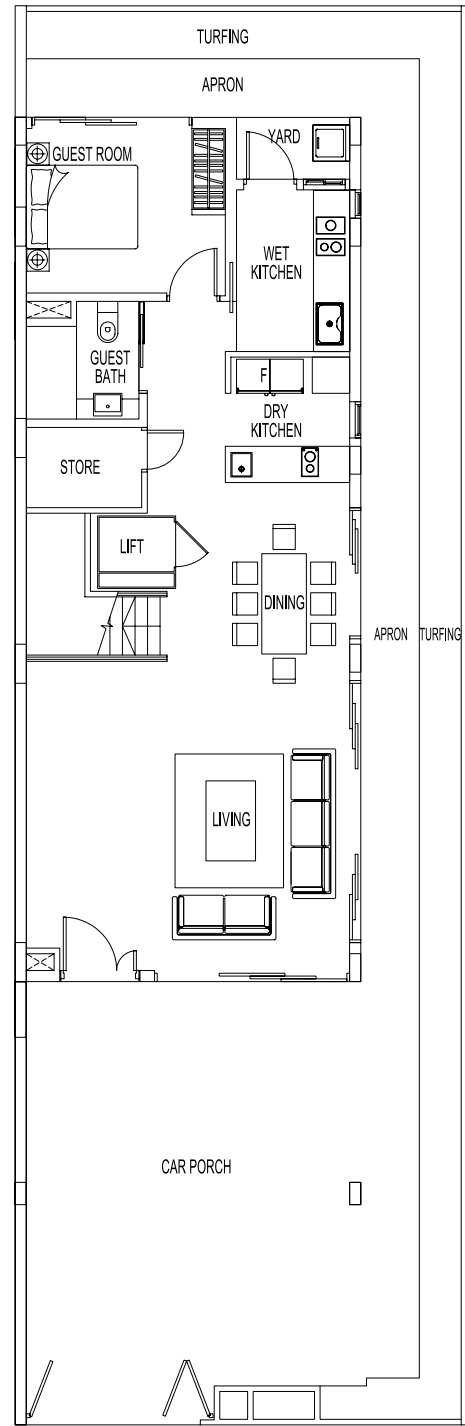
Plans are subjected to changes as may be required or approved by the relevant authorities. Areas are estimates only and are subjected to final survey.

All external and internal walls are of masonry and/or reinforced concrete panel and/or pre-fabricated panel construction and/or metal fencing.

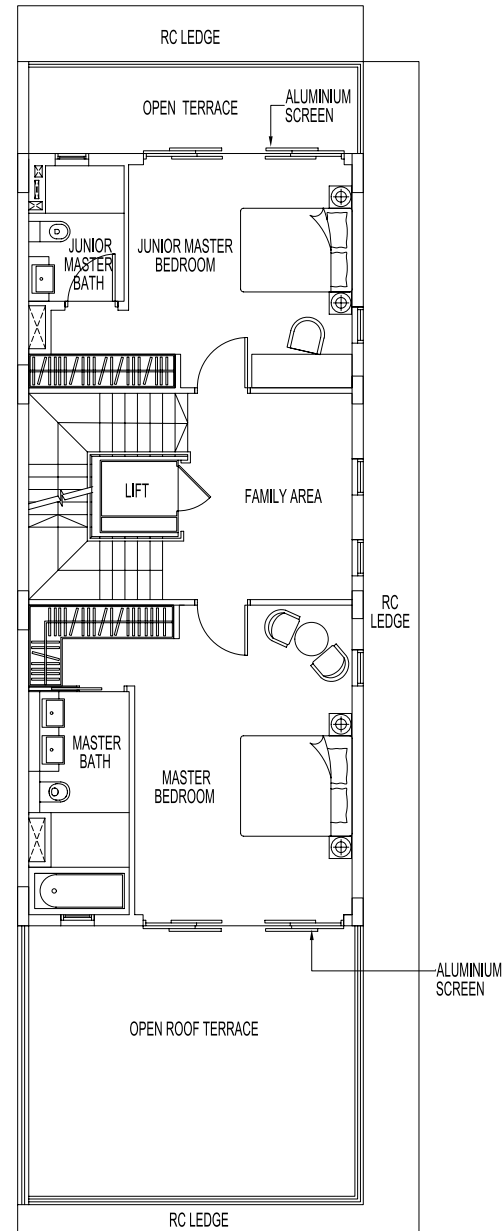
# SEMI-DETACHED - TYPE SD6(L)

3 SELETAR GREEN AVENUE

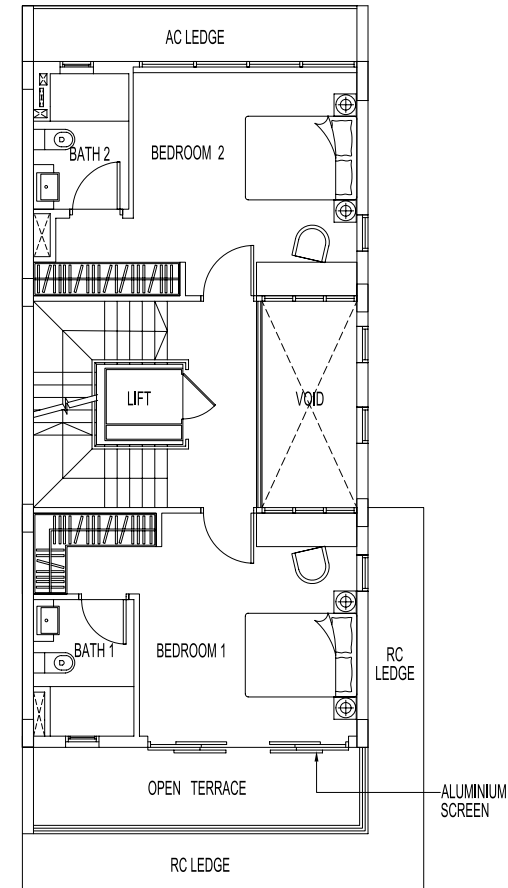
Plot Area: 206.1 sqm | Estimated Floor Area: 400 sqm



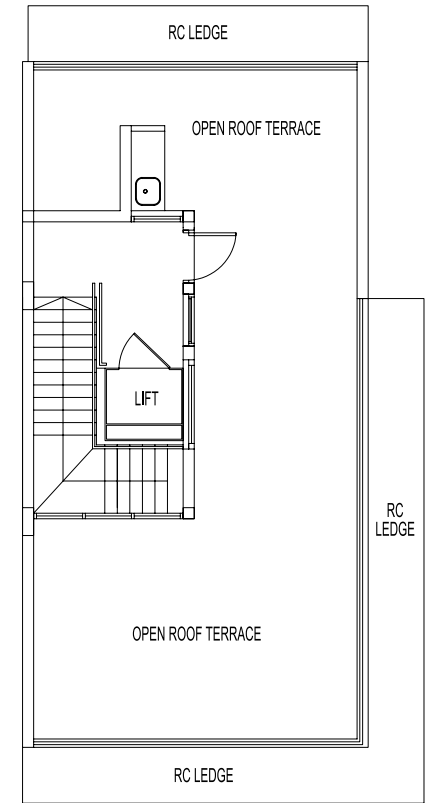
1st Storey



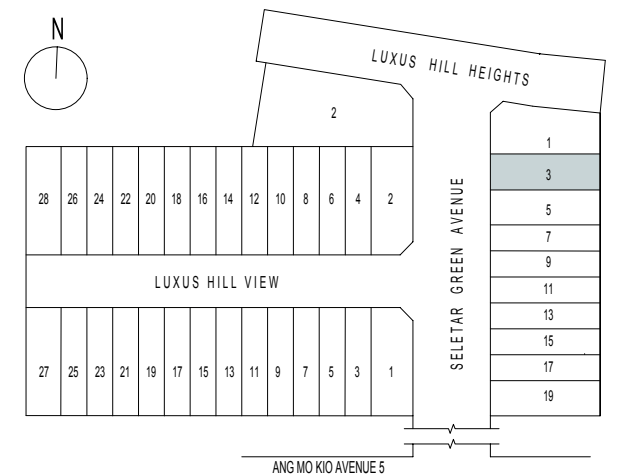
2nd Storey



3rd Storey



Roof Terrace



(Inclusive of car porch, AC ledge, open terrace and open roof terrace)

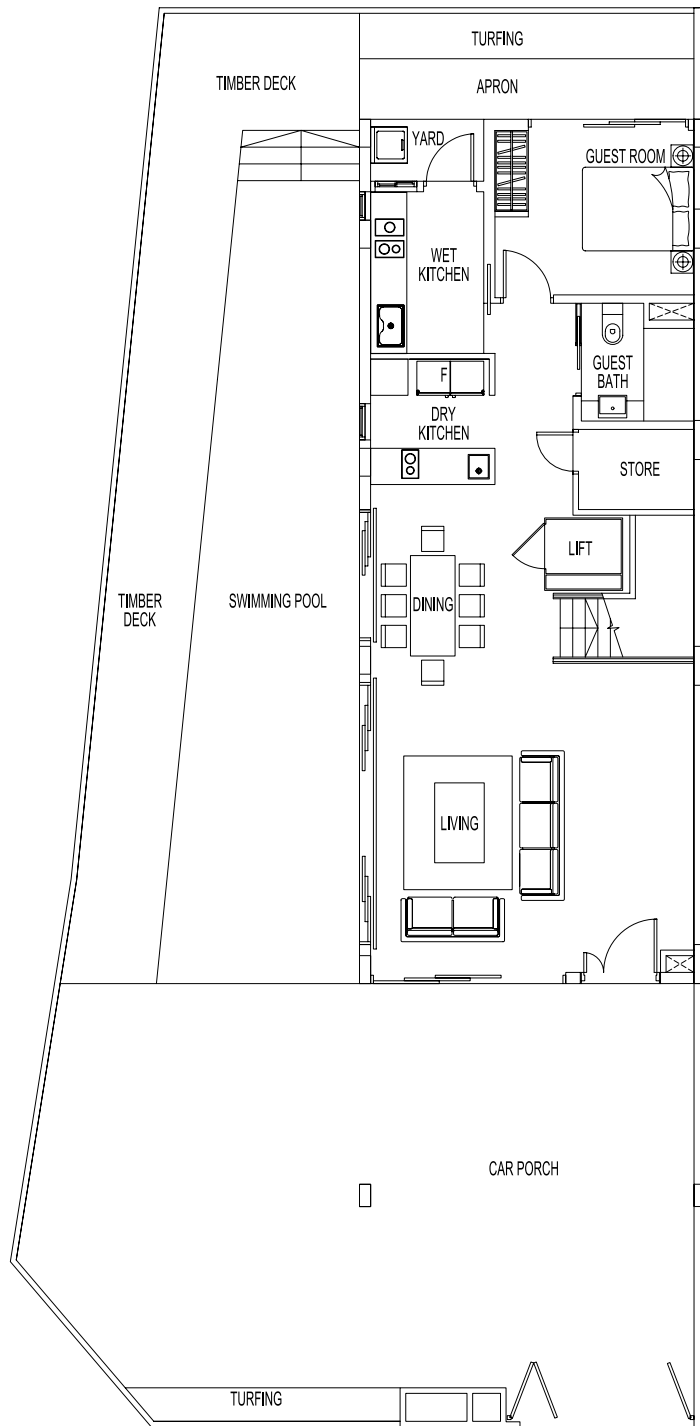
Plans are subjected to changes as may be required or approved by the relevant authorities. Areas are estimates only and are subjected to final survey.

All external and internal walls are of masonry and/or reinforced concrete panel and/or pre-fabricated panel construction and/or metal fencing.

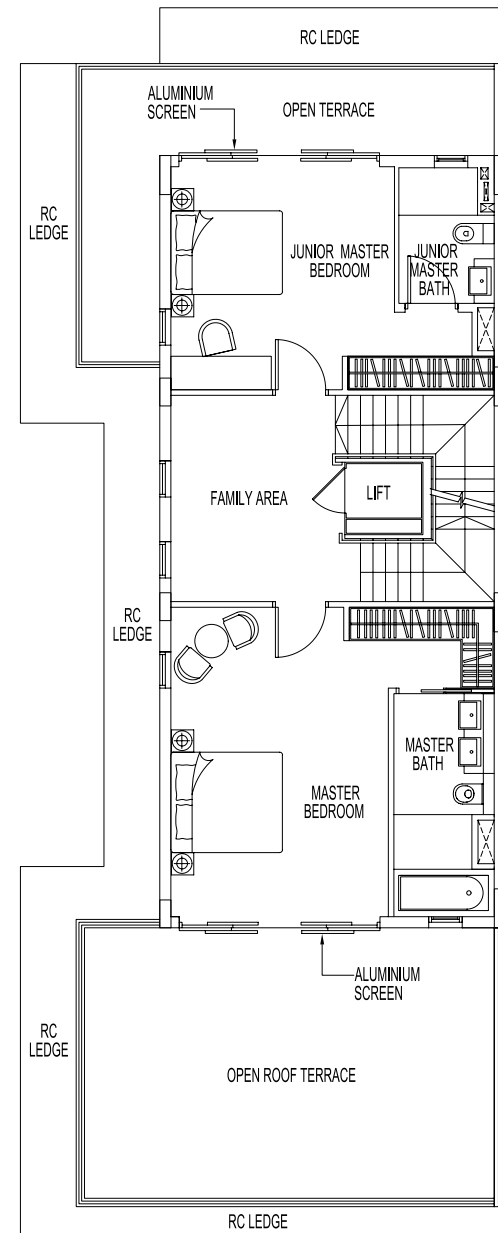
# SEMI-DETACHED - TYPE SD6(S)(L)

1 SELETAR GREEN AVENUE

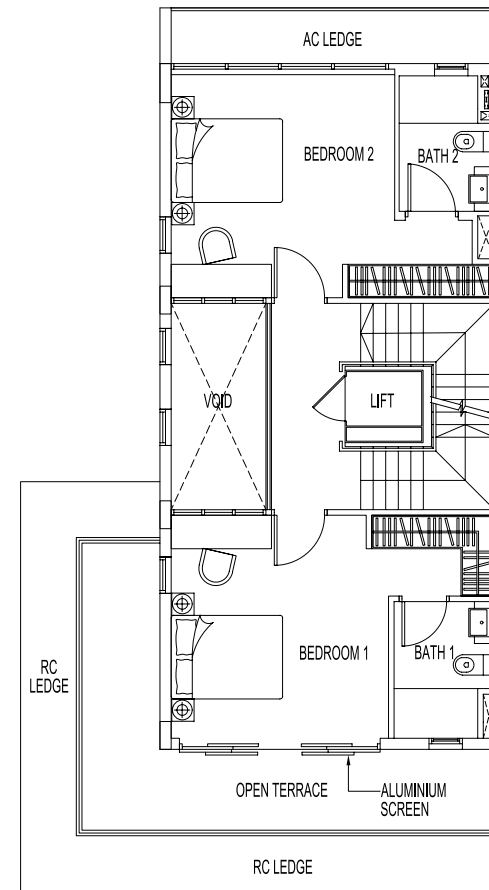
Plot Area: 277.6 sqm | Estimated Floor Area: 423 sqm



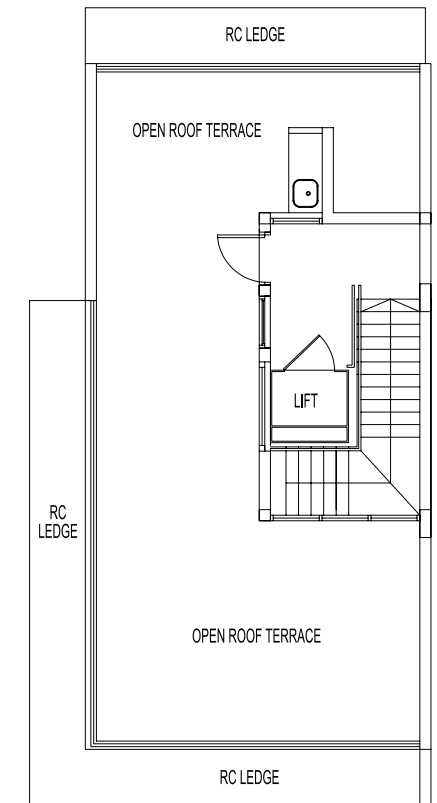
1st Storey



2nd Storey



3rd Storey

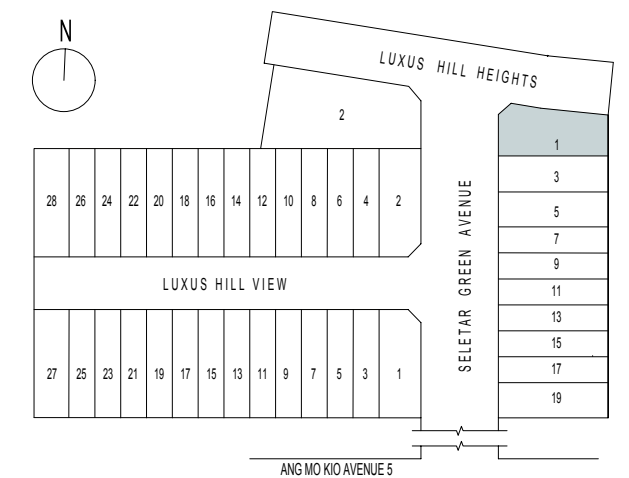


Roof Terrace

(Inclusive of car porch, AC ledge, open terrace and open roof terrace)

Plans are subjected to changes as may be required or approved by the relevant authorities. Areas are estimates only and are subjected to final survey.

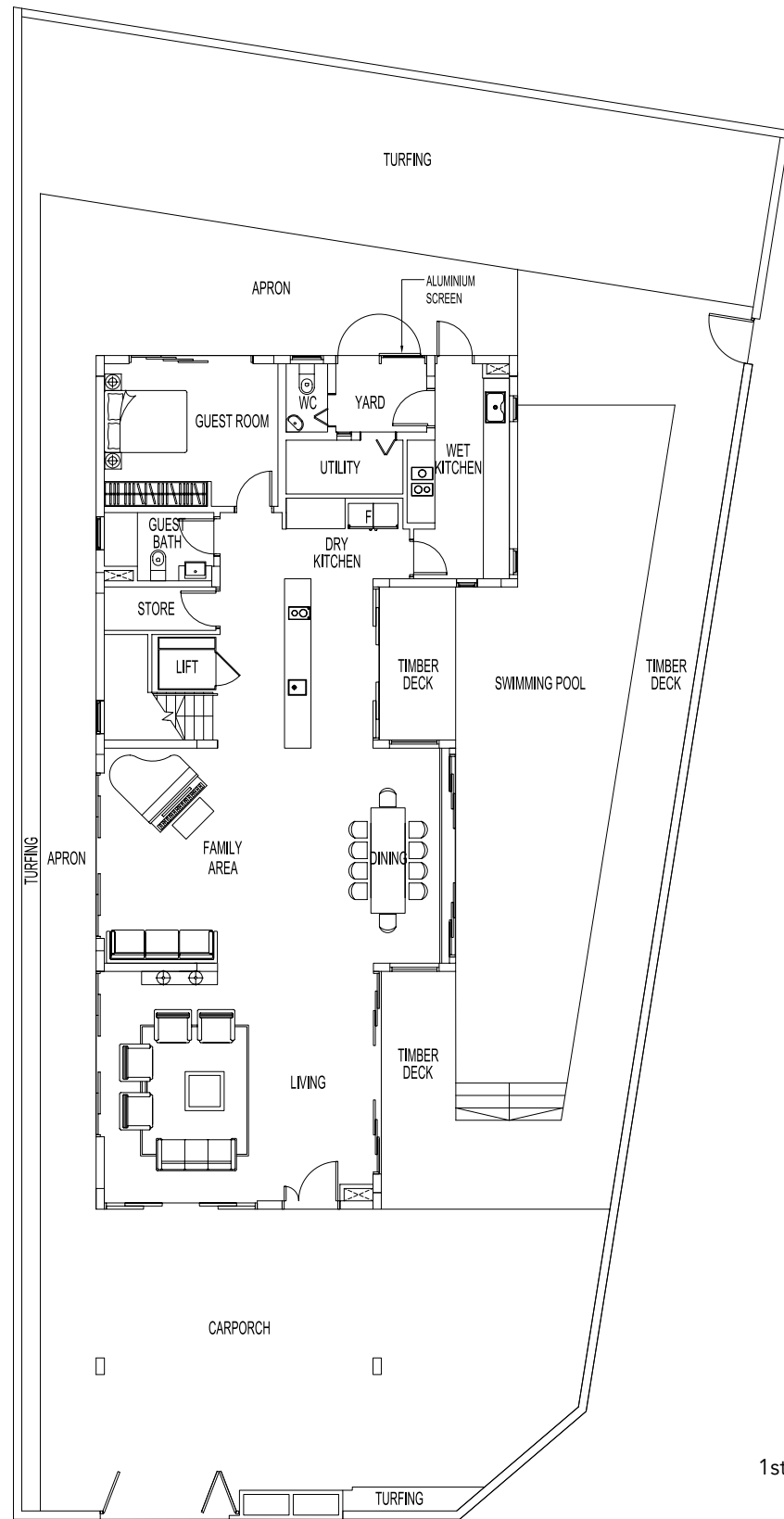
All external and internal walls are of masonry and/or reinforced concrete panel and/or pre-fabricated panel construction and/or metal fencing.



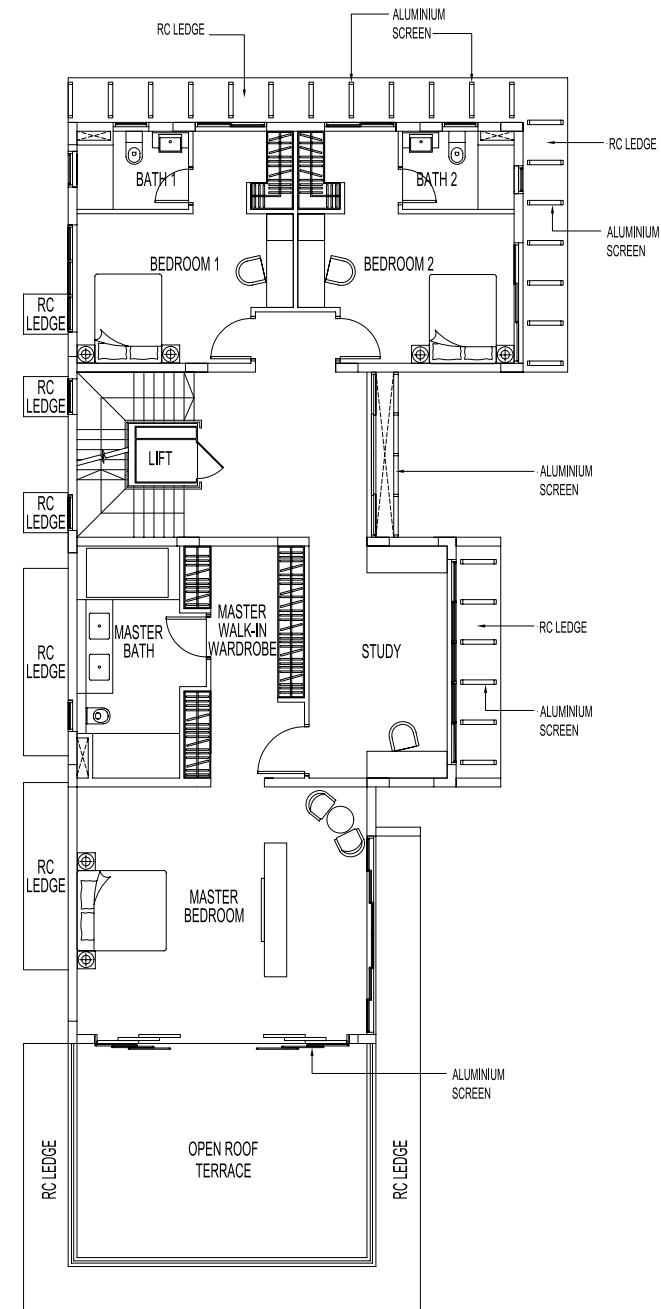
# VILLA - TYPE VL1(S)(L)

2 SELETAR GREEN AVENUE

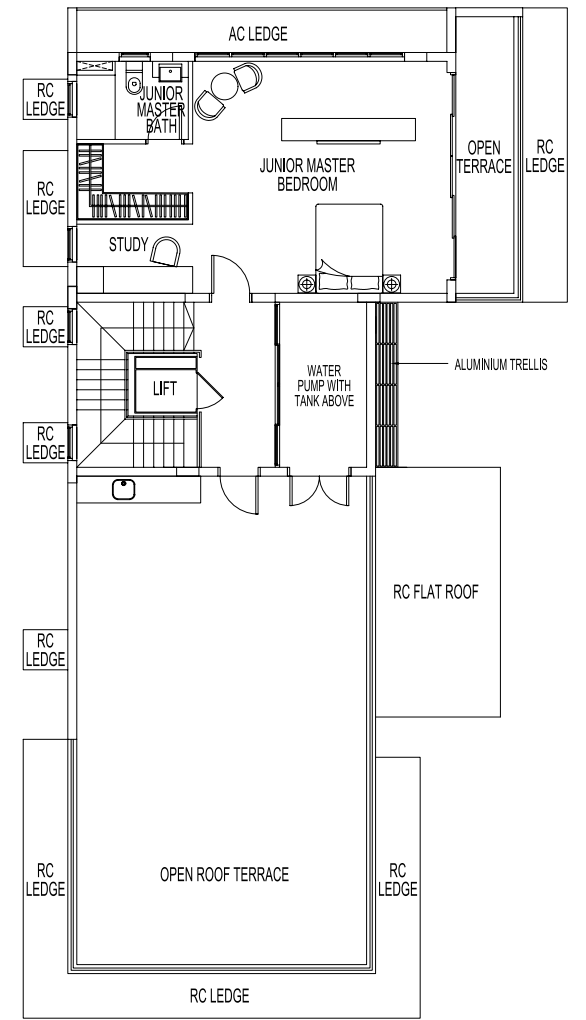
Plot Area: 566.3 sqm | Estimated Floor Area: 560 sqm



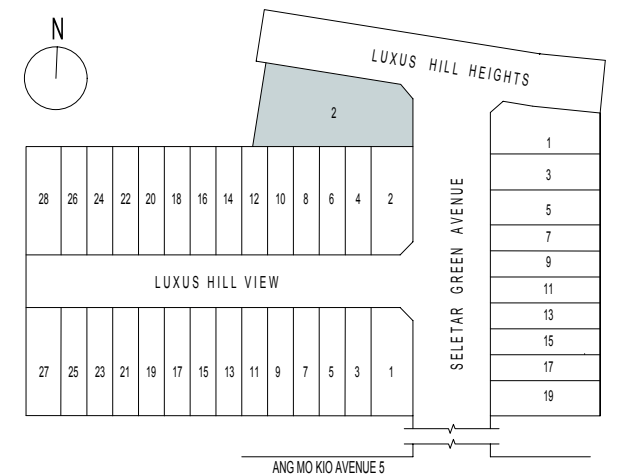
1st Storey



2nd Storey



3rd Storey



(Inclusive of car porch, AC ledge, open terrace, open roof terrace and water pump with tank area)

Plans are subjected to changes as may be required or approved by the relevant authorities. Areas are estimates only and are subjected to final survey.

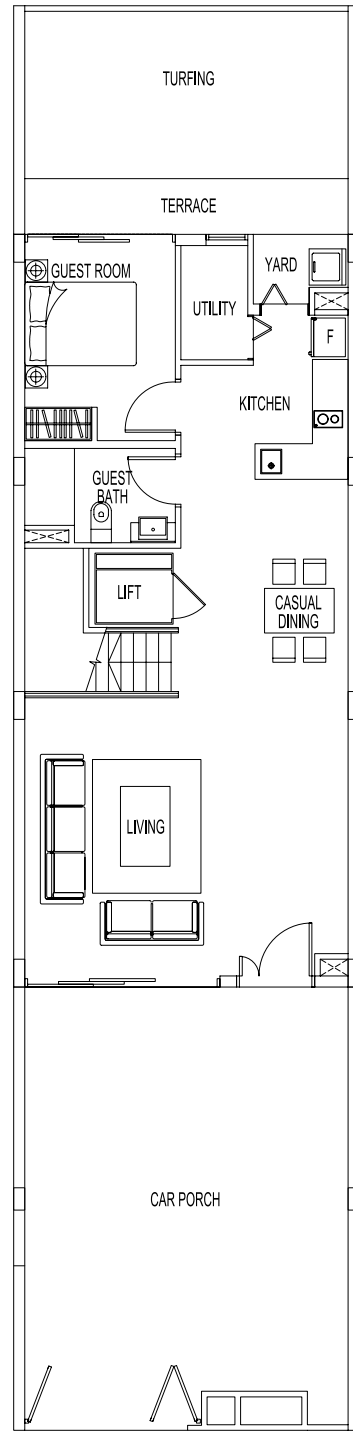
All external and internal walls are of masonry and/or reinforced concrete panel and/or pre-fabricated panel construction and/or metal fencing.

# INTERMEDIATE TERRACE - TYPE N(L)

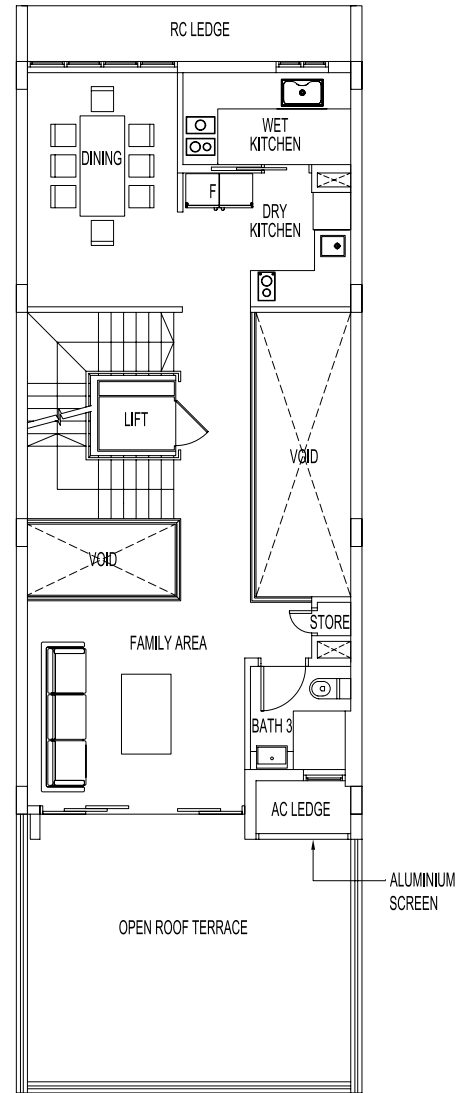
7, 11, 15 SELETAR GREEN AVENUE

MIRROR IMAGE: 9, 13, 17 SELETAR GREEN AVENUE

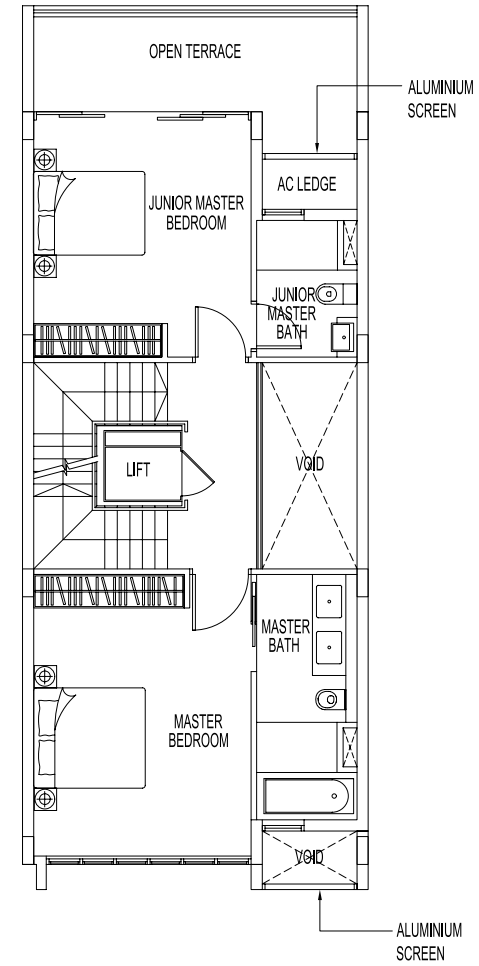
Plot Area: 152.7 sqm | Estimated Floor Area: 344 sqm



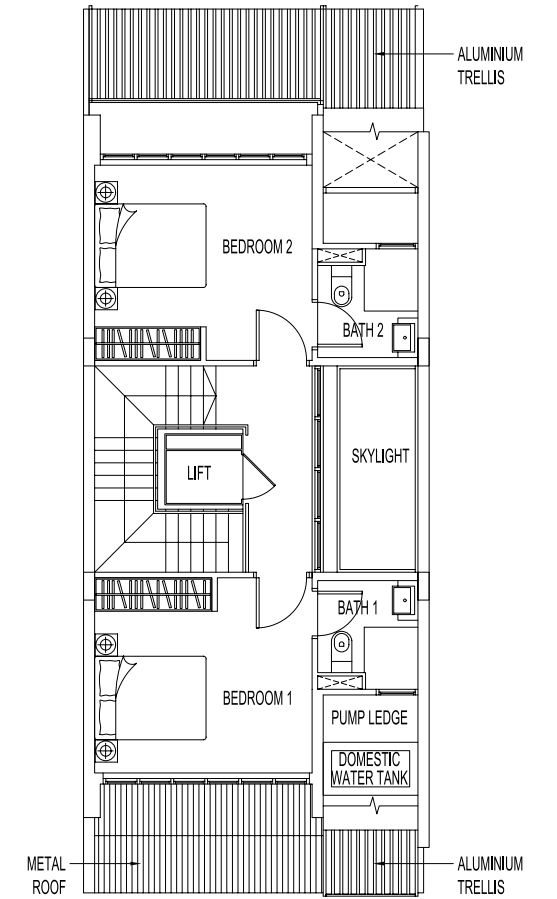
1st Storey



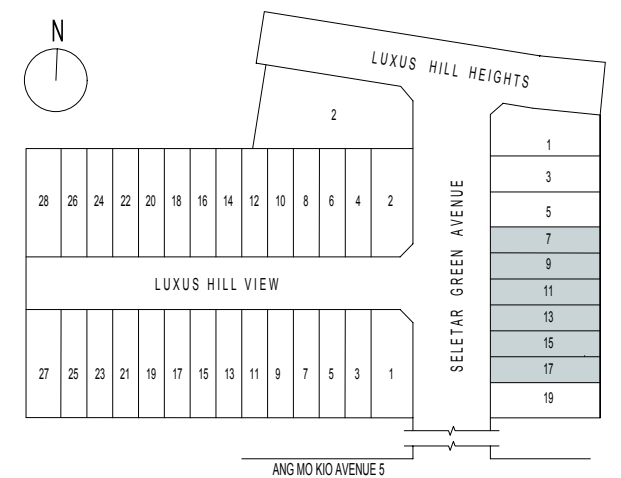
2nd Storey



3rd Storey



Attic



(Inclusive of car porch, AC ledge, open terrace, open roof terrace, skylight, pump ledge and domestic water tank area)

Plans are subjected to changes as may be required or approved by the relevant authorities. Areas are estimates only and are subjected to final survey.

All external and internal walls are of masonry and/or reinforced concrete panel and/or pre-fabricated panel construction and/or metal fencing.

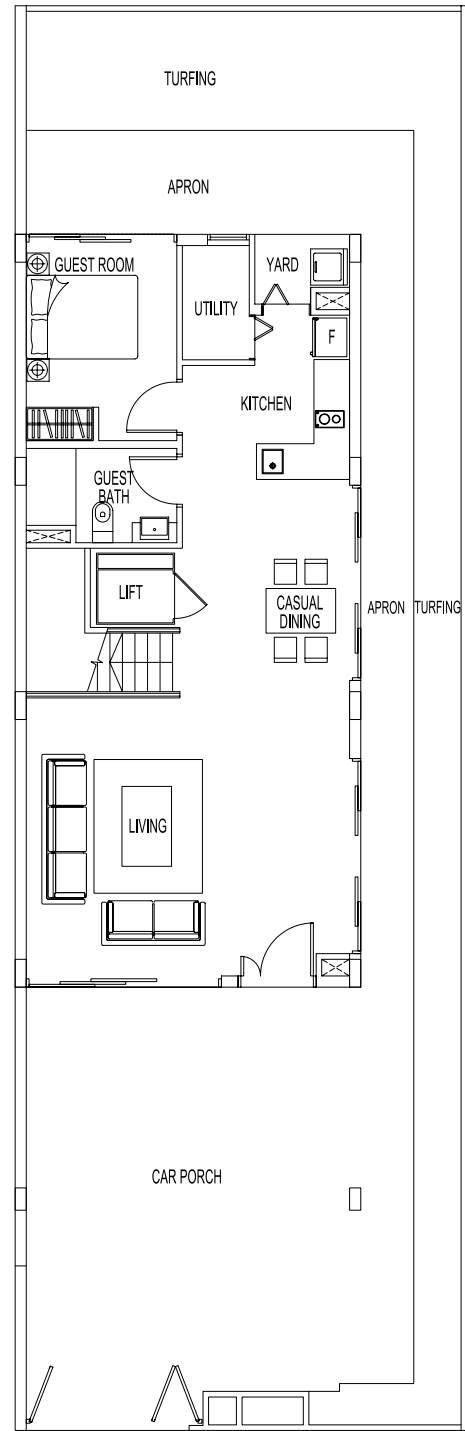


# CORNER TERRACE - TYPE N1(L)

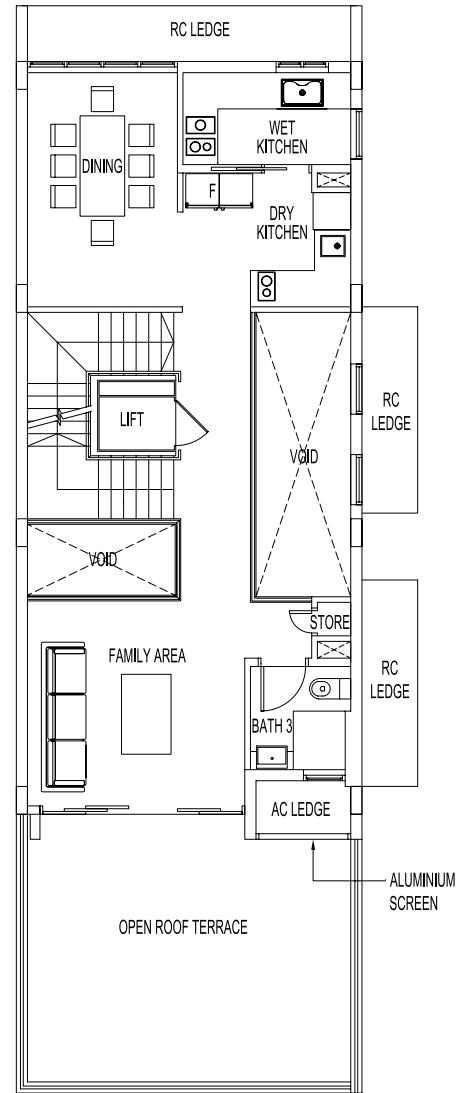
19 SELETAR GREEN AVENUE

MIRROR IMAGE: 5 SELETAR GREEN AVENUE

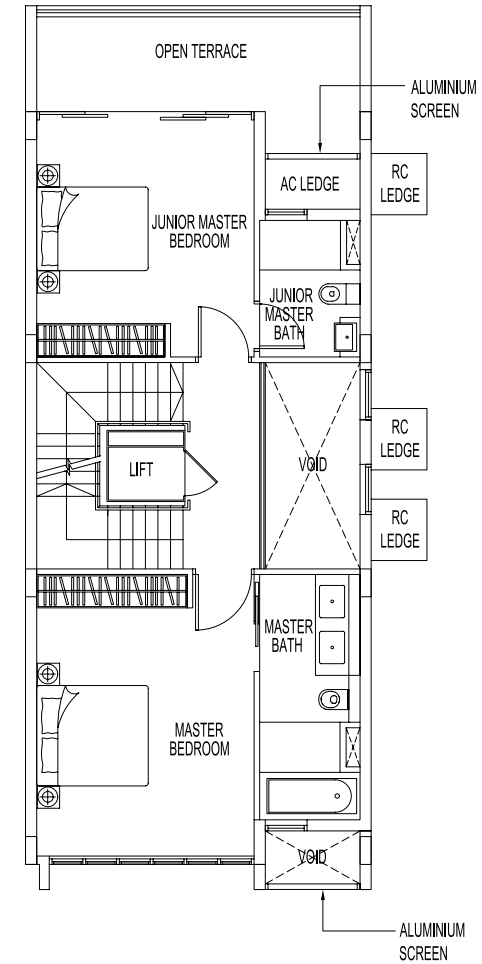
Plot Area: 206.1 sqm | Estimated Floor Area: 349 sqm



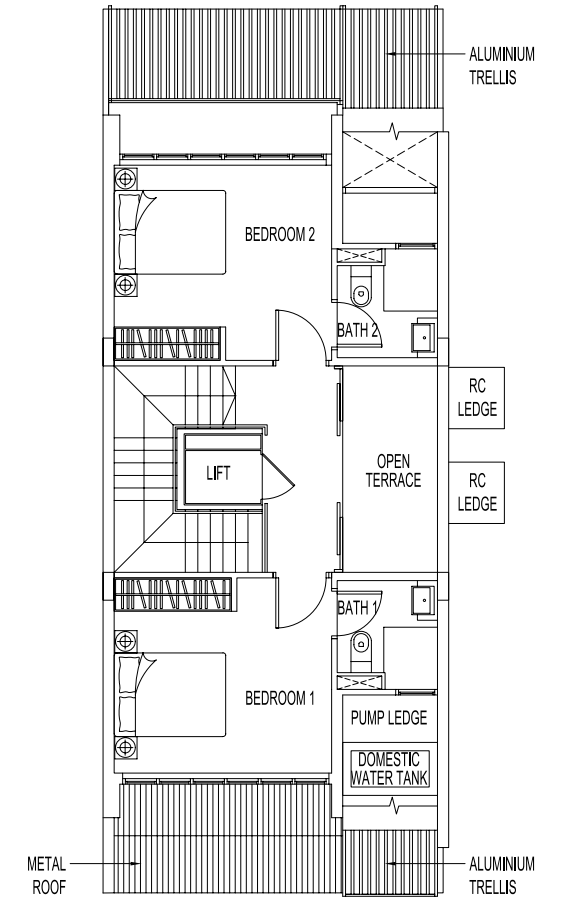
1st Storey



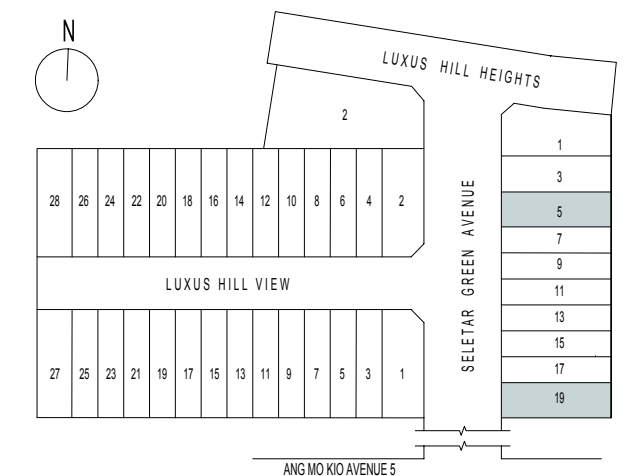
2nd Storey



3rd Storey



Attic



(Inclusive of car porch, AC ledge, open terrace, open roof terrace, skylight, pump ledge and domestic water tank area)

Plans are subjected to changes as may be required or approved by the relevant authorities. Areas are estimates only and are subjected to final survey.

All external and internal walls are of masonry and/or reinforced concrete panel and/or pre-fabricated panel construction and/or metal fencing.